



BIGHORN-DESERT VIEW WATER AGENCY

Our Mission - "To provide a high quality supply of water and reliable service to all customers at a fair and reasonable rate."

Planning/Legislative/Engineering & Grant Standing

Committee SPECIAL Meeting Agenda

Committee Members: President Burkhart & Director Close-Dees

BOARD MEETING OFFICE
1720 N. CHEROKEE TRAIL
LANDERS, CALIFORNIA 92285

February 20, 2024
Time – 3:00 PM

PUBLIC AND BOARD WISHING TO PARTICIPATE REMOTELY
TELECONFERENCE LINE THRU ZOOM 669-900-6833

OR

Join Zoom Meeting

Please click the link below to join the webinar:

<https://us02web.zoom.us/j/86098879738?pwd=eG93azB2NGQ3L0pzdE9mOWVwRXREUT09>

Passcode: 777471

Or Dial:

1-669-900-6833

Webinar ID: 86098879738

Passcode: 777471

CALL TO ORDER

PLEDGE OF ALLEGIANCE

ROLL CALL

APPROVAL OF AGENDA

Discussion and Action Items - The Committee Directors and Staff will discuss the following items, and the Committee will consider taking action, if so inclined.

The Public is invited to comment on any item on the agenda during discussion of that item. When giving your public comment, please have your information prepared. If you wish to be identified for the record, then please state your name. Due to time constraints, each member of the public will be allotted three minutes to provide their public comment.

1. Status Report of Activities of the Community Water Systems Alliance

2. Status Report Goat Mountain Replacement Well (Prop. 1/ Rnd. 1 Grant)

3. **Status Report Water Meter Replacement Program (Drought Grant)**
4. **Status Report System Interconnection at Winters & Rainbow Road (Prop. 1/Rnd 2 Grant)**
 - a. Discuss proposal for engineering services from
5. **Status Report Potable Water Systems Improvements Consolidation of Water Systems (\$11M PI/C Project Grant)**
 - a. Discuss proposal for engineering services from
 - b. Discuss proposal for land Survey services
6. **Consent Items** – The following items are expected to be routine and non-controversial and will be acted on by the Committee at one time without discussion, unless a member of the public or member of the Committee requests that the item be held for discussion or further action.

- a. PLEGS Committee SPECIAL Meeting Minutes, **October, 17, 2023.**

Recommended Action:

Approve as presented:

7. Public Comment Period

Any person may address the Committee on any matter within the Agency's jurisdiction on items not appearing on this agenda. When giving your public comment, please have your information prepared. If you wish to be identified for the record, then please state your name. Due to time constraints, each member of the public will be allotted three minutes to provide their public comment. State Law prohibits the Committee from discussing or taking action on items not included on the agenda.

8. Verbal Reports - Including Reports on Courses/Conferences/Meetings

1. Committee Members' Comments/Reports
2. General Manager's Report
3. Assistant General Managers Report

9. Adjournment

In accordance with the requirements of California Government Code Section 54954.2, this agenda has been posted in the main lobby of the Bighorn-Desert View Water Agency, 622 S. Jemez Trail, Yucca Valley, CA not less than 72 hours if prior to a Regular meeting, date and time above; or in accordance with California Government Code Section 54956 this agenda has been posted not less than 24 hours if prior to a Special meeting, date and time above.

As a general rule, agenda reports or other written documentation have been prepared or organized with respect to each item of business listed on the agenda.

Copies of these materials and other disclosable public records in connection with an open session agenda item, are also on file with and available for inspection at the Office of the Agency Secretary, 622 S. Jemez Trail, Yucca Valley, California, during regular business hours, 8:00 A.M. to 4:30 P.M., Monday through Friday. If such writings are distributed to members of the Board of Directors on the day of a Board meeting, the writings will be available at the entrance to the Board of Directors meeting room at the Bighorn-Desert View Water Agency.

Internet: Once uploaded, agenda materials can also be viewed at www.bdvwa.org

Public Comments: You may wish to submit your comments in writing to assure that you are able to express yourself adequately. Per Government Code Section 54954.2, any person with a disability who requires a modification or accommodation, including auxiliary aids or services, in order to participate in the meeting, should contact the Board's Secretary at 760-364-2315 during Agency business hours.

Policy Committee Meeting**January 24, 2024****8:30* – 9:30 am****Join Zoom Meeting**

<https://us06web.zoom.us/j/82234626096?pwd=IVaTlmo39kc4GdQ1e4JCGQ09z4Oqcl.1>

Meeting ID: 822 3462 6096

Passcode: 327168

AGENDA

*The Policy Committee will meet following the Steering Committee, but not before 8:30 am.

| | | | |
|----|--|--------|---------------------------|
| 1. | Call to order | Pg. | Marina West |
| 2. | Attendance | - | Tim Worley |
| 3. | Changes or additions to the agenda | - | |
| 4. | Approval of minutes of September 27, 2023 meeting Recap of October 16, 2023 Planning Meeting | 2 4 | Marina West Tim Worley |
| 5. | Regulatory Issues a) “Making Conservation a California Way of Life” b) CrVI; One Water Econ economic study | - - | Tim Worley |
| 6. | Legislative Issues a) Water bonds | - | Tim Worley |
| 7. | Other Issues a) Groundswell Rally for Water Justice b) Los Angeles Times Op-Ed | 7 9 | |
| 8. | Adjourn | | Marina West |



CWSA Policy Committee **DRAFT**

The September 27, 2023 meeting of the Policy Committee was called to order at 8:32 am by Chair Marina West.

Attendance

Managing Director Tim Worley recorded the meeting participants.

Members Present

Marina West, Bighorn Desert View Water Agency
Alex Rojas, Central Basin Municipal Water District
Jackie McCloud, City of Watsonville
Victoria Llort, Coachella Valley Water District
Sarah Johnson, Joshua Tree Water District
David Shook, Joshua Tree Water District
David Pedersen, Las Virgenes Municipal Water District
Jennifer Cusack, Hi Desert Water District
Stacy Taylor, Mesa Water District
Alicia Dunkin, Orange County Water District

Staff and Guests

Oracio Gonzalez, Ollin Strategies
Susan Allen, CalMutuals
Tim Worley, CWSA
Scott Goodell, IE Works
Yasmeen Nubani, CWSA
Jim Ciampa, Lagerlof LLP
Karina Cervantez, CalMutuals

Minutes

Minutes of the August 23 ,2023 meeting were **moved, seconded (Taylor/Llort)**, and approved by voice vote.

IE WORKS presentation

Susan Allen introduced Scott Goodell from IE Works. Mr. Goodell gave a brief history of the company and stated that IE Works' goal is to build a workforce consortium for water and wastewater. His organization is trying to provide workplace learning and create a pipeline of workers for the water industry. This comes through a twelve-week program where participants work part time at different water systems to learn about different areas of the industry. IE Works checks in to make sure that placements receive their certifications within four months of hire and evaluate their learning progress. The costs of the program get reimbursed either as a part of salary or internship hourly wages.

Stacy Taylor mentioned that she would love to see a similar program in Orange County and can connect IE Works staff to ACWA, where they have a new group that distributes workforce development grants and scholarships.

Regulatory IssuesMaking water conservation a way of life

Tim Worley explained that the regulation is extremely complicated. It flows from two bills passed in 2018 and includes multiple components regarding indoor and outdoor residential water use, commercial (CII) water use, and water loss control. There is a hearing on October 4, and Mr. Worley will make oral comments on behalf of CWSA. Comments will center around compliance and enforcement of the regulations as well as getting technical assistance. General comments will be included looking for more flexibility for the whole regulation, especially for organizations that have done a lot of work reducing water use in their communities already.

Jennifer Cusack mentioned that her district, Hi-Desert Water District, was asked by the State Water Board along with a few other cities and agencies to give a presentation on the regulations. All the districts asked to present have a history of overdraft in their areas and were forced to implement conservation measures. Presenters will include the Cities of Santa Barbara, Long Beach and Davis. In Hi-Desert Water District, their basin was adjudicated in the 1980s which triggered a building moratorium as well as aggressive education programs and a tiered rate structure. Under the proposed regulations, there are other requirements that they will still need assistance with. The district will have to increase the budget to achieve more conservation efforts. Ms. Cusack wants the State Water Board to simplify the variance process and make a variance calculations tool online to assist. Susan Allen suggested having Yasmeen and Tim cover the testimony at the meeting and do a press release to amplify the voices of this.

Chrome-6

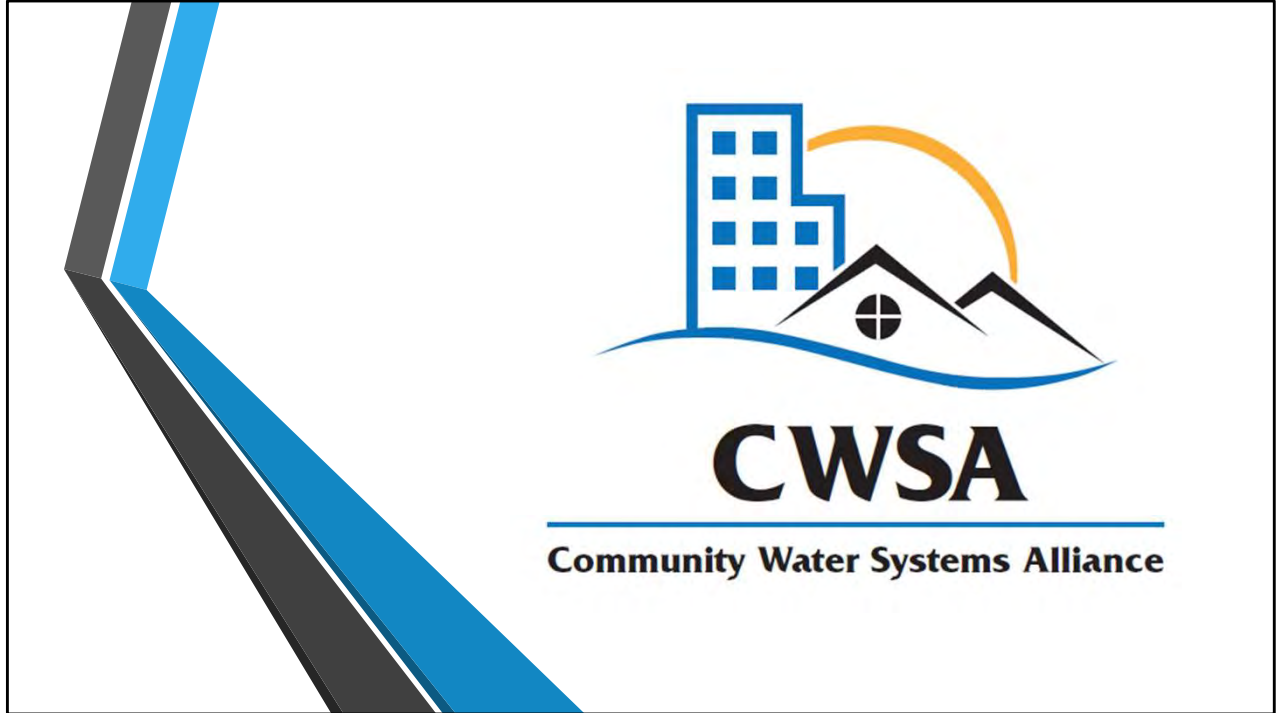
Tim Worley reported that the final meeting of the Project Advisory Committee on the economic affordability study will be scheduled soon. They are looking at ways to expand the impact of the study with a webinar or workshop in January. There is additional opportunity for the Alliance to build on the study for a bill we may propose for next year, adding requirements for the State Water Board on economic feasibility.

Other Business

Mr. Worley mentioned that the annual meeting will be on October 16 at the Frontier Project in Rancho Cucamonga. He encouraged everyone to attend in person.

Stacy Taylor reported that Mesa Water District hired economic consultants for a cost analysis of the conservation regulations. The consultants dug into the SRIA and came to very different conclusions than the Water Board staff did. The costs are underestimated and the benefits are overestimated for this regulation.

With no further business, Chair West adjourned the Policy Committee at 9:33 am.



Annual Planning Meeting

October 16, 2023

**Frontier Project
Rancho Cucamonga**

Welcome!


California-Nevada Section, AWWA
Sue Mosburg, Executive Director




2

Agenda


| Time (approx.) | Activity |
|----------------|--|
| 10:00 am | Welcome from Sue Mosburg |
| 10:10 am | 2023 Highlights; Review Strategic Plan |
| 11:00 am | Discuss Policy Ideas and Opportunities for 2024-25 |
| 12:00 pm | Lunch Break |
| 12:45 pm | Prioritize Opportunities for 2024 |
| 1:45 pm | CWSA Organization |
| 2:30 pm | Recap – Plan and Commitments |
| 3:00 pm | Adjourn |



3

Year in Review


- Engagement increased with Water Board, consistent with CWSA priorities
 - Focus on needs of small and disadvantaged communities
 - No "one size fits all" approach
 - More communication and resources



4

Year in Review

- Membership is stable, but has not expanded
 - Mixer at ACWA – limited success
- Alliances with other organizations not developed beyond CalMutuals
 - Joint meeting with Senator Laird on Cr(VI)



5

Year In Review

State Legislation

- SB 48 – Oppose unless amended (Amended, and our opposition was dropped)
- AB 838 – Opposed (Died in Assembly)
- SB 3 – Opposed (Passed, awaiting Governor action)

Federal Legislation

- Supported CERCLA liability protection (PFAS)



6


Year In Review

Water Conservation

- "Making Water Conservation a California Way of Life"
- Data inaccuracy, complexity, cost, and infeasible standards
 - April 2023
 - October 2023

Chromium VI

- Oral presentation on concerns – August 2023
- Written comments -




7

Two Notable Successes!

- "Water Conservation as a California Way of Life"
- Primary MCL for Chromium VI



Play Tour Video



8

Janet Clements


"Affordability and Financial Needs Assessment for California's Proposed MCL for Hexavalent Chromium"

9

Should CWSA propose a bill in 2024?

- Affordability of Drinking Water Regulations
- Water System "Safe Surrender"




10

Other Policy Ideas CWSA Should Consider?

11

Are We Organized For Success?

- Resources – Money and personnel
- Leadership
- Membership




12

Membership Groups

- Shared concerns
 - Example: Cr (VI)
- Regional agencies support DACs
 - Example: MWA, WRD-CBMWD, CVWD
- New concept:
 - Community of Interest
 - Financial threshold
 - At least one "convenor" (city, district, possibly a county)

CWSA Regional Membership Model (Concept)



13

Happy it is not raining! Tim got a selfie with Sarah and Jackie as people were arriving.



ABOVE: Jim posed with an attendee.



LEFT: After their speeches, Tim got a photo with Miguel Luna from the MWD Board and Jennifer Pierre, State Water Contractors Executive Director.



Former Assembly Speaker and former Los Angeles Mayor Antonio Villaraigosa kicked off the rally.



Speakers included Charlie Wilson (L), Executive Director of the Southern California Water Coalition; and Rick Callender (R), representing the California-Hawaii Chapter of NAACP, who is also CEO of Valley Water in Santa Clara County.

Too many towns are waiting for clean water

Gov. Newsom promised to fix the state's 'pathetic' water crisis. But in towns like Tooleville, you can't turn on the tap and drink.



THE FRIANT-KERN CANAL is off limits to the 77-home unincorporated community of Tooleville in the Central Valley. (Tomas Ovalle For The Times)

BY MIRIAM PAWEL

Barely a month after he took office in 2019, Gov. Gavin Newsom journeyed to a rural school in the Central Valley and stood by chance against a backdrop more prescient than he had planned: a classroom whiteboard that posed the “Essential Question — How do you respond to challenges?”

The governor had chosen Riverview Elementary School, in Parlier, to dramatize his first bill-signing, an interim fix to provide tens of millions of dollars to buy bottled water for communities with contaminated wells. “We can’t even provide basic drinking water to a million-plus Californians?” Newsom said, before posing for photo ops where drinking fountains had been sealed for more than a year. “Pathetic.”

He vowed to find money to finance permanent solutions to the problem, most prevalent in the Central Valley. “I don’t deserve to be your governor if I can’t figure out a way to get that done.”

A few months later, he and the Legislature did find funds: \$1.3 billion over 10 years to help hundreds of small water districts that rely on groundwater from wells that have gone dry or become contaminated by agricultural and industrial

waste.

Finding the money has turned out to be the easy part. Five years after the governor's visit, students at Riverview still drink bottled water.

Faced with attitudes toward state government that range from distrust to low expectations, Sacramento officials have struggled to forge partnerships in communities divided by class and race. For once, the state has money, along with increased authority to force changes. What's missing is leadership to disrupt a process where intolerable delays are accepted as inevitable.

The State Water Resources Control Board, which administers the \$1.3-billion drinking water program, has awarded hundreds of millions of dollars in planning, technical assistance and construction grants, and some progress has been made. But water districts are joining the failing list as fast as they are moving off it. Of California's 3,000-plus water districts, the most recent data show 386 systems failing, 507 at risk and 403 more potentially at risk.

The state's inability to get ahead of the crisis is due in part to complications made worse by intransigence, in part to better data and stricter safety standards that implicate more systems, and in part to drought and climate change. But it's also due to reliance on a state agency built for regulatory functions, now called on to collaborate with struggling and polarized communities and ensure pipelines get built. The water board took particular umbrage at the title of a recent state audit that criticized its lack of urgency; it is hard to see how any other word could be appropriate.

The red dots on the water board's map that tracks water systems dependent on unsafe or dry wells are clustered in unincorporated areas, overwhelmingly lower income, home to people of color, historically shut out of cities by racial covenants and redlining. Forced to live in places without public services, they dug wells, and when the wells ran dry, they dug deeper. The most realistic solution for many of these communities is to consolidate — with the local governments that historically shut them out.

In Tulare County, the hostility now is more veiled than in the 1970s, when the General Plan deemed 15 communities nonviable and recommended withholding public services, including water, so they would "enter a process of long term, natural decline" and fade away. Thirteen are still around. One of them is Tooleville, 77 homes separated from the Sierra Nevada foothills by the Friant-Kern Canal, full of water the residents cannot touch. The state pays for each home to receive six five-gallon jugs every two weeks.

For decades, the solution has been clear: Connect Tooleville with the city of Exeter's water supply — less than one mile away. Exeter refused, repeatedly. After state money became available to cover the added costs, and it seemed the city had run out of excuses, the council voted unanimously to discontinue talks. "We have our own issues," Exeter Mayor Mary Waterman-Philpot told a roomful of Tooleville residents, snorting at the idea the state would pay for the one-mile extension. "I'd like Santa Claus to come do things, too."

Eventually, the state ordered them to consolidate; an agreement was finalized last year. A short-term fix to connect Tooleville homes to Exeter's water is supposed to be in place by September, but the full project is estimated to take eight years.

In the nearby hamlet of Tombstone, a \$3-million project that was supposed to be finished in 2022 is now a \$6-million project with an estimated completion at the end of 2026, delayed by difficulties negotiating with owners of land needed to run one mile of pipe to connect to a nearby system.

Such facts, as Newsom has said about the overall water crisis, would not be tolerated in Beverly Hills. Of the many entrenched inequalities plaguing California, the uncontroversial goal of clean drinking water should be relatively attainable.

The Essential Question on the white board in the Parlier school remains as unresolved as the solution to the school's water supply: how to meet the challenges.

Newsom is on the record: "That we're living in a state with a million people that don't have access to clean, safe, affordable drinking water is a disgrace." In 2019, he took his Cabinet to the Central Valley to impress upon top aides the import of the drinking water issue. In his first State of the State, the governor stressed that correcting the crisis would "demand political will from each and every one of us."

Newsom needs to renew and revisit that commitment, and use both his power and his bully pulpit to analyze delays and impose urgency, so that actions live up to rhetoric.

Miriam Pawel is the author of, among other books, "The Crusades of Cesar Chavez: A Biography." She is at work on a history of the University of California.

**BIGHORN-DESERT VIEW WATER AGENCY
PLANNING/LEGISLATIVE/ENGINEERING/GRANTS/SECURITY
AGENDA ITEM SUBMITTAL**

Meeting Date: February 20, 2024

To: PLEGs Committee Members

Budgeted: Funded thru Dept. of Water
Resources Grant No. 4600014979 (4/2023)

Cost:

Grant Budget: \$37,000

Agency Share: \$14,000 (est.)

From: Marina D. West

General Counsel Approval: Required on
Professional Services Agreement

CEQA Compliance: Notice of Determination
filed May 2021 (SCH No. 2021020354)

Subject: Review Recommendation to Authorize Issuance of Professional Services Agreement to California Rural Water Association (CWRA) for Intertie No. 2 (BDVWA to HDWD) Pipeline Design Services at a Cost of \$50,892.

SUMMARY

As a Small Water System, Bighorn-Desert View Water Agency receives assistance from California Rural Water Association (CRWA) through the Mojave Water Agency Small Water Systems Program (SWS). CRWA was selected by MWA through a competitive professional service proposal process for Fiscal Year 2023/24. CWRA has been working with the SWS for many years and BDVWA has been the recipient of numerous services through CWRA at no cost or minimal cost.

Staff requested a proposal from CRWA to advance the design of the HDWD Intertie No. 2. The proposed cost to complete the design drawings is \$50,892 and staff anticipates agendizing the approval of a Professional Services Agreement at the March 2024 Board of Directors meeting for this project.

At this time, the cost liability to the Agency for the design effort would be approximately \$14,000 as the grant budgeted \$37,000 for the engineering design services. However, these costs could be covered by the grant should the overall project come in under its total budget of \$675,000.

RECOMMENDATION

That the Committee consider taking the following action(s):

1. Agendize approval of Professional Services Agreement with California Rural Water Association (CRWA) for engineering design services for Intertie No. 2 (BDVWA to HDWD) Pipeline at a cost of \$50,892.

BACKGROUND/ANALYSIS

The Agency was awarded a grant in the amount of \$675,000 to design and construct a second emergency water supply intertie with Hi-Desert Water District. This project was originally part of the overall grant

application for the project known as the Potable Water Systems Improvements and Consolidation of Water Systems. However, it was not awarded under that program. Following the application submittal, the State Water Resources Control Board rejected this particular project. In the meantime, Mojave Water Agency, through the Department of Water Resources funding pool was able to procure a grant to advance this project.

Agency accepted that grant and this project became “Project 3: System Interconnection at Winters and Rainbow Road – Zone B Pumping Station on April 11, 2023.

The Board approved a contract with Monument Right-of-Way to secure easements for the larger \$11M Potable Water Systems Improvements and Consolidation of Water Systems (PI/C) Project. This Intertie No. 2 (HDWD #2) pipeline construction will be located within an easement needed for the PI/C Project. Therefore, no additional right-of-way is needed to construct this project beyond what will be secured under the Monument ROW contract.

Staff is ready to proceed with engineering design of this project and has received a proposal from California Rural Water Association for this effort. CRWA has been selected by Mojave Water Agency under a competitive process to provide such services to MWA Small Water Systems, like BDVWA, and even though BDVWA will pay the costs associated with the scope of work, we are essentially “piggy backing” onto MWA’s preferred vendor. This eliminates the need for SWS to develop “request for proposal” documents and review and vet submitted proposals, a skill-set that SWS don’t typically have on staff.

Due to the established working relationship with CWRA over many years now either directly or via the Mojave Water Agency SWS, staff is recommending proceeding forward to engaging CRWA in the design effort.

Staff is recommending the Committee move the item to the full Board of Directors to authorize issuance of a Professional Services Agreement with California Rural Water Association in the amount of \$50,892. At least \$37,000 is budgeted for reimbursement through the grant. Therefore, the Agency’s share is estimated at \$14,000. This could eventually be reimbursed should the project come under the total grant award or if additional funds can be secured.

PRIOR RELEVANT BOARD ACTION(S)

8/9/2022 Motion No. 22-034 Resolution No. 22R-15 Attachment F5a Authorizing Resolution to apply for construction grant funding for the project identified as Potable Water Systems Improvements and Consolidation of Water Systems.

Bighorn Task 2: HDWD Intertie No. 2 Design

Project Understanding:

The Bighorn Desert View Water Agency (BDVWA) operates two public water systems that provide potable water to approximately 2,480 service connections. Prior work was completed “by others” to prioritize necessary improvements. This scope of work is focused on designing the necessary intertie pipeline from the High Desert Water District (HDWD) Intertie No. 2.

Project Approach:

CRWA’s intent is to retain the value of the previous engineering services provided to the BDVWA by adopting the 30% CADD files. Figure 1 on the following page presents the location of each alignment per phase as presented in the Zone B Blending and Transmission drawing set. CRWA has assumed that the designs of Project 2 Phase A and Project 1 may be incorporated within this drawing set to avoid the production of the additional sheets associated with presenting these designs as independent drawing sets.

The scope of work for each task is described on the following page. Production of the design drawings and specifications would follow the general milestones outlined below which consists of three submittals:

70% Design

The 70% design will include plan profile sheets using AutoCAD Civil3D presenting the basic alignment with the profile included based on additional survey work provided by BDVWA as needed and as defined by the CRWA under Task 2 below. Outline specifications will be included with this submittal.

90% Design

The 90% Design will include a substantially complete set of drawings with additional utilities shown within the plan and profile based on Utility Service Alert markings surveyed and ready for a detailed final review prior to the 100% submittal. Draft technical specifications and anticipated front end (contract) documents (to be provided by BDVWA) will be included. An engineer’s estimate of probable construction cost will be submitted with the 90% design.

100% Design

The 100% submittal will include a “bid ready” set of plans and specifications that incorporates all final comments received from BDVWA. An engineer’s estimate of probable construction cost will be submitted with the 100% design.

SCOPE OF WORK:

Task 1 – Project Management

Project work will be overseen, coordinated, and directed by a designated project manager. This task will include various project management tasks including miscellaneous correspondence and related follow-up, coordination with team members, monthly invoicing, and budget tracking.

As part of the project management task CRWA will provide right-of-way (ROW) coordination with the ROW consultant contracted by BDVWA. This scope of work is limited to 10 hours of coordination by a Senior Engineer and 10 hours of coordination by an Associate Engineer for this task. Project delays or redesigns based on the ROW consultant's needs may result in additional coordination time which would be charged on a time and materials basis.

Task 2 – Data Review, Meetings, and Site Visits

Prior to commencing design work, the CRWA team will review available information, including the PER, prepared by others to develop a more intimate understanding of the long-term project objectives, identify missing information, verify right of way requirements, and determine possible additional work needed to fully comply with the grant requirements and develop a complete project. During this time, the preliminary schedule included herein will be verified and updated if necessary.

Task Deliverables:

Updated schedule and a summary memo documenting existing information and outstanding data requirements followed by an in-person kickoff meeting to discuss the memo and review the design intent of the project.

Task 3 – Project 1 HDWD Intertie No. 2 Design

This task includes preparing the design of pipeline plan and profile sheets from the BDVWA Zone B pump station site at Rainbow Road to the HDWD stub-out at Warren Vista Drive (approximately 2,200 feet along Winters Rd. from Rainbow/Surry to Warren Vista) as depicted under HDWD in the key map above. Review of the initial drawings prepared by NV5 indicate that this design has not yet been initiated.

Details regarding tie-ins at each location will be confirmed under Task 2 above.

The following is a preliminary understanding of the details concerning this design, along with a sheet list and related commentary:

Previous design efforts by NV5 present an alignment for the transmission main from the future Zone B Pump Station to Zone B (Mesa Vista X Wamego Trail) within the Zone B Blending and Transmission Pipelines drawings but do not include any draft sheets for the interconnection between the existing HDWD stub-out on Warren Vista Avenue and the future Zone B Pump Station. Only partial topographic data was found for this portion of Winters Rd.

Task Deliverables:

Completion of this design will consist of preparing at least (3) plan and profile sheets and (2) point of connection details. This proposal assumes the design may be incorporated into the Zone B Blending and Transmission Pipelines drawings.

Task 4 – 90% Submittal Meeting

After BDVWA has had time to review the 90% submittal CRWA will conduct a meeting, in person or virtual, to review and discuss BDVWAs comments and concerns regarding the design and prepare meeting minutes to document BDVWAs expectations for the 100% bid set drawings. This meeting will also serve as CRWAs final opportunity visit the site and document any relevant existing condition if necessary.

EXCEPTIONS/EXCLUSIONS

1. The scope of work described herein is focused on the necessary conveyance facilities. Additional tasks may be added pending a more detailed review of work by others to date, necessary ancillary components that may include additional tie-in needs, pressure reducing valves, flow monitoring and control features, along with other components that may be identified pending a more detailed review and completion of the initial pipeline design and related plan and profile sheets.
2. Bidding Services if required, are not included in this scope of work. CRWA can provide a subsequent task order if this support is requested by BDVWA.
3. Construction Services if required, are not included in this scope of work. CRWA can provide a subsequent task order if this support is requested by BDVWA.

SCHEDULE:

The estimated schedule of the Project is as follows:

| Task No. | Task Name | Completion Date |
|----------|--|-----------------|
| Task 1 | Project Management | Ongoing Task |
| Task 2 | Data Review, Meetings, and Site Visits | Ongoing Task |
| Task 3 | Project 1 HDWD Intertie No. 2 Design | 11/15/2024 |
| Task 4 | 90% Submittal Meeting | 10/1/2024 |

BUDGET:

CRWA may, as the project requires, move budgets across line items without prior approval from BDVWA. The budget is based on time and materials, not to exceed \$50,892 based on the following task budgets:

| Task No. | Task Name | Budget |
|-----------------|--|-----------------|
| Task 1 | Project Management | \$10,502 |
| Task 2 | Data Review, Meetings, and Site Visits | \$5,500 |
| Task 3 | Project 1 HDWD Intertie No. 2 Design | \$34,220 |
| Task 4 | 90% Submittal Meeting | \$670 |
| | Task Order Total | \$50,892 |

For CRWA:
California Rural Water Association

By: _____

Date: _____

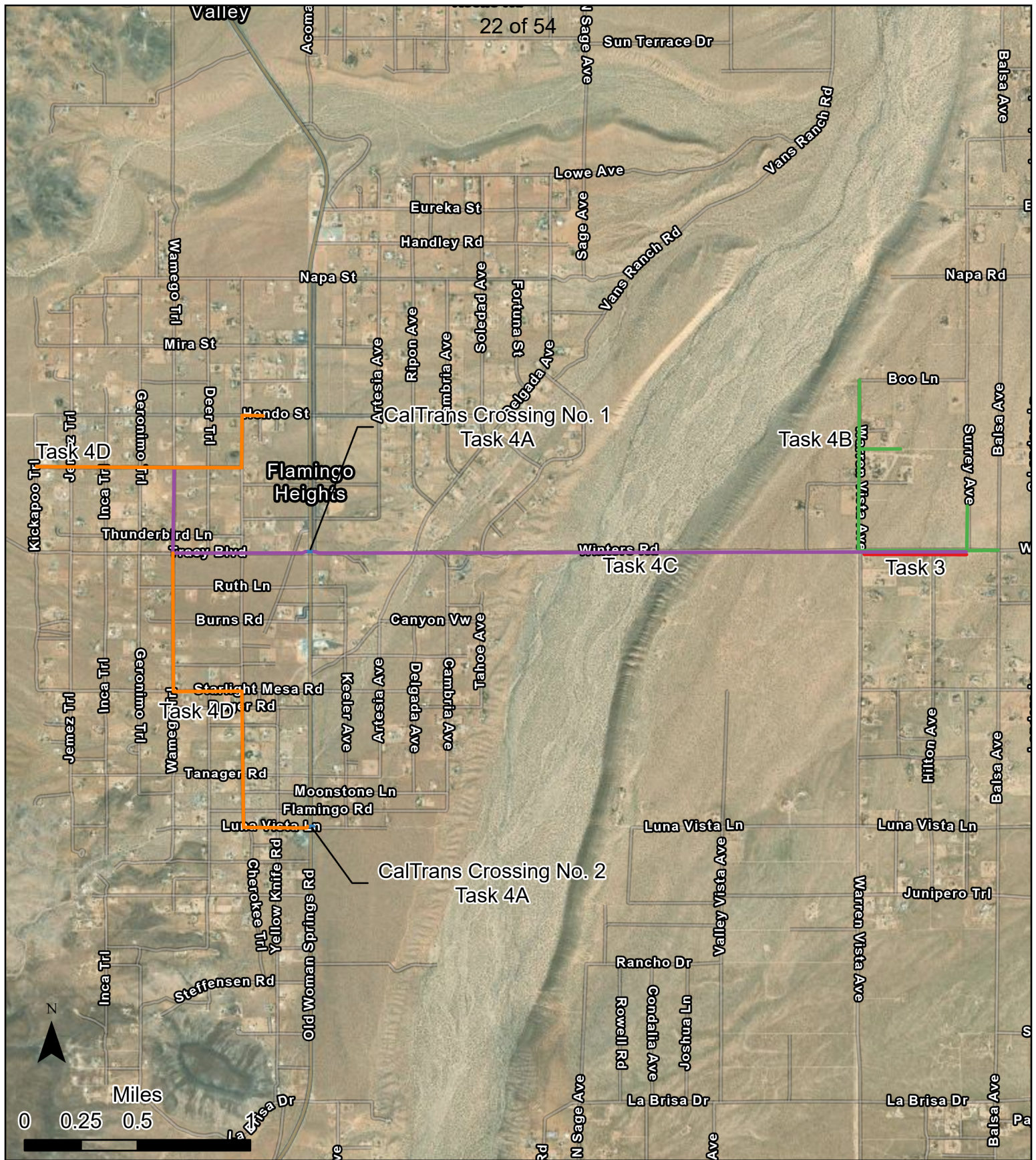
For Client:
Bighorn Desert View Water Agency

By: _____

Date: _____

By: _____

Date: _____



Bighorn-Desert View Water Agency Project Tasks

- Task 3 - HDWD Intertie Transmission Main (Project 1)
- Task 4A - CalTrans Crossings 1& 2 Design (Project 2- Phase A)
- Task 4B - Goat Mountain Distribution Piping (Project 2 - Phase B)
- Task 4C - Winters Road/Tracy Blvd Transmission Line (Project 2 - Phase C)
- Task 4D - Winters Road/Tracy Blvd Transmission Line (Project 2 - Phase C)

Task 4A, 4B, 4C
and 4D under
separate grant

**BIGHORN-DESERT VIEW WATER AGENCY
PLANNING/LEGISLATIVE/ENGINEERING/GRANTS/SECURITY
AGENDA ITEM SUBMITTAL**

Meeting Date: February 20, 2024

To: PLEGs Committee Members

Budgeted: Funded thru SWRCB PI/C Grant Agreement No. D2102065/ Proj. No. 3610009-002C

Cost: \$279,000

From: Marina D. West

General Counsel Approval: Required on Professional Services Agreement

CEQA Compliance: Notice of Determination filed May 2021 (SCH No. 2021020354)

Subject: Review Recommendation to Authorize Issuance of Professional Services Agreement to California Rural Water Association (CWRA) for Pipeline Improvement and Consolidation (PI/C) Project Pipeline Design Services

SUMMARY

As a Small Water System, Bighorn-Desert View Water Agency receives assistance from California Rural Water Association (CRWA) through the Mojave Water Agency Small Water Systems Program (SWS). CRWA was selected by MWA through a competitive professional service proposal process for Fiscal Year 2023/24. CWRA has been working with the SWS for many years and BDVWA has been the recipient of numerous services through CWRA at no cost or minimal cost. In fact, CRWA completed the grant application for the Potable Water System Improvements & Consolidation of Water Systems (PI/C) Project which led to the award of this \$11M grant.

Staff requested a proposal from CRWA to advance the design of the Pipeline Improvement and Consolidation (PI/C) Project. The proposed cost to complete the design drawings is \$279,000 and staff anticipates agendizing the approval of a Professional Services Agreement at the March 2024 Board of Directors meeting for this project.

At this time, staff anticipates the grant will cover the full cost of the proposed engineering design services which are focused on the “transmission and blending pipeline” as well as some ancillary pipeline to eliminate dead-end in the vicinity of the booster station feeding the transmission pipeline.

RECOMMENDATION

That the Committee consider taking the following action(s):

1. Agendize approval of a Professional Services Agreement to California Rural Water Association (CWRA) for engineering design services for the Potable Water System Improvements & Consolidation of Water Systems (PI/C) Project.

BACKGROUND/ANALYSIS

The Agency was awarded an \$11M construction grant to advance pipeline improvements envisioned in the Agency Preliminary Engineering Report (PER) completed in October 2021.

Staff is ready to proceed with engineering design of this project and has received a proposal from California Rural Water Association for this effort. CRWA has been selected by Mojave Water Agency under a competitive process to provide such services to MWA Small Water Systems, like BDVWA, and even though BDVWA will pay the costs associated with the scope of work, we are essentially “piggy backing” onto MWA’s preferred vendor. This eliminates the need for SWS to develop “request for proposal” documents and review and vet submitted proposals, a skill-set that SWS don’t typically have on staff.

Due to the established working relationship with CWRA over many years now either directly or via the Mojave Water Agency SWS, staff is recommending proceeding forward to engaging CRWA in the design effort.

Staff is recommending the Committee move the item to the full Board of Directors to authorize issuance of a Professional Services Agreement with California Rural Water Association in the amount of \$279,000. The engineering design services are covered in the grant Agreement therefore there are no expected Agency out-of-pocket costs at this time.

PRIOR RELEVANT BOARD ACTION(S)

2/14/2023 Motion No. 23-006 Adopt Resolution No. 23R-03 Authorize execution of \$11,000,000 Funding Agreement No. D2102065 with the State Water Resources Control Board for the Purpose of the Potable Water Supply Systems Improvements Consolidation of Water Systems Project No. 3610009-002C.

Bighorn 1: Pipeline Design for Bighorn Desert View Water Agency

Project Understanding:

The Bighorn Desert View Water Agency (BDVWA) operates two public water systems that provide potable water to approximately 2,480 service connections. The proposed DWR grant funded project will increase system reliability through interconnections, provide consolidation of an isolated portion of the system, replace aging infrastructure, and improve energy efficiency. Prior work was completed “by others” to prioritize necessary improvements to achieve the above goals. This scope of work is focused on designing the necessary conveyance facilities for the intertie pipelines, transmission and distribution mains, and pipelines for blending with supplies from the High Desert Water District (HDWD) to reduce the concentrations of uranium to within the State mandated maximum contaminant levels as determined and recommended by others.

The following excerpt from the related preliminary engineering report provides context for the proposed improvements:

“BDVWA is a special district of the state of California formed in 1969 to provide potable water service to its customers. BDVWA currently serves approximately 1,977 active residential customers, 507 infrequent/inactive customers, and 102 bulk-hauling customers within its service area. BDVWA serves two separate potable water systems within its service area: the BDVWA system (Public Water System (PWS) No. CA3610009), and the Goat Mountain system (PWS No. CA3610060). The State Water Resources Control Board’s Division of Drinking Water, District 13 (DDW), is the regulatory agency for both water systems.

The Goat Mountain system was added to BDVWA’s service area in 2015 when BDVWA annexed County Service Area 70, Zone W1 (CSA 70-W1), which bordered BDVWA to the east (San Bernardino LAFCo Resolution No. 3194, January 2015). CSA 70 W-1 was composed of four separate areas, three of which were service ‘islands’ within BDVWA’s existing service area that were already served by BDVWA through a contract with the County of San Bernardino. The fourth and largest area of CSA 70-W1 was an approximately 5,624-acre area that was served entirely by CSA 70-W1 facilities and is now referred to as the Goat Mountain system. At the time of the annexation, BDVWA and CSA 70-W1 did not have any interconnecting facilities. BDVWA continues to operate the Goat Mountain system as a separate system from the rest of BDVWA’s service area. Significant infrastructure improvements will be required to integrate the two systems due to the lack of connecting pipelines and to the incompatibility of the two systems’ adjacent pressure zones with existing facilities. Furthermore, each system contains deteriorated facilities, hydraulic deficiencies, infrastructure vulnerabilities, and the potential for significant energy savings.”

Work was initiated by others that included a preliminary engineering report along with a percentage of the pipeline design work, various pump station design work, surveying, and geotechnical engineering. Right of way acquisition is also being conducted by others under direct contract with BDVWA.

The previous design work by NV5 as referenced within the RFP includes three distinct sets of drawings:

1. Consolidation of BDVWA and GM Systems
This set of drawings contains nearly 13 plan and profile sheets at a completion of 90% for various piping improvements north of Reche Road between Landers Lane and N. Kuna Avenue. CRWA's review of the RFP indicates that completion of this drawing set is not within the scope of requested engineering services.
2. Zones B and D1 Pump Station Improvements
This drawing set consists of 7 sheets of site civil and mechanical drawings at 70% completion for the retrofit of a new pump at the existing R-1 booster pump station and a new Zone B booster pump station. CRWA's review of the RFP indicates that completion of this drawing set is not within the scope of requested engineering services.

Note: Review of these mechanical drawings and Figure 8 of the PER indicate that the HDWD system pressure at the stub out on Warren vista is less than BDVWA's Zone B pressure, thus for conveyance of flows from HDWD to Zone B it has been assumed that the proposed transmission main on Winters Road to Tracy Blvd (Phase C) begins at the proposed location for the Zone B Pump Station, not at Warren Vista as described in the RFP.

3. Zone B Blending and Transmission Pipelines
This drawing set contains a total of 35 plan and profile sheets for Project 2 Phases B, C, and D as described in the RFP. The drawings are labelled as 50% complete but lacks the topographic information necessary to generate a profile view of the pipeline. As with any pipeline design, significant time and effort is required in preparing a detailed profile view which clearly depicts all known existing utilities. Since the existing drawings do not feature any topographic information (with exception of Reservoir B site, and Zone B Pump Station) or initial profile views, CRWA considers these drawings at 30% completion.

Project Approach:

CRWA's intent is to retain the value of the previous engineering services provided to the BDVWA by adopting the 30% CADD files. With this in mind, it has been assumed that the design drawings for Phases B, C, and D will be left within this Zone B Blending and Transmission drawing set and the alignment designations for Phases B, C, and D will be referred to as presented in these drawings. Figure 1 on the following page presents the location of each alignment per phase as presented in the Zone B Blending and Transmission drawing set. CRWA's has assumed that the designs of Project 2 Phase A and Project 1 may be incorporated within this drawing set to avoid the production of the additional sheets associated with presenting these designs as independent drawing sets.

For the purpose of this proposal, the work has been divided into two main tasks which include the system intertie (Task 3) and the related transmission, distribution, and blending pipelines (Task 4). Figure 1 presents the pipelines in terms of both task and planning phase. The beginning and end of each alignment presented is consistent with the Zone B Blending and Transmission drawing set. The scope of work for each task is described on the following page. Production of the design

drawings and specifications would follow the general milestones outlined below which consists of three submittals:

70% Design

The 70% design will include plan profile sheets using AutoCAD Civil3D presenting the basic alignment with the profile included based on additional survey work provided by BDVWA as needed and as defined by the CRWA under Task 2 below. Outline specifications will be included with this submittal.

90% Design

The 90% Design will include a substantially complete set of drawings with additional utilities shown within the plan and profile based on Utility Service Alert markings surveyed and ready for a detailed final review prior to the 100% submittal. Draft technical specifications and anticipated front end (contract) documents (to be provided by BDVWA) will be included. An engineer's estimate of probable construction cost will be submitted with the 90% design.

100% Design

The 100% submittal will include a "bid ready" set of plans and specifications that incorporates all final comments received from BDVWA. An engineer's estimate of probable construction cost will be submitted with the 100% design.

SCOPE OF WORK:

Task 1 – Project Management

Project work will be overseen, coordinated, and directed by a designated project manager. This task will include various project management tasks including miscellaneous correspondence and related follow-up, coordination with team members, monthly invoicing, and budget tracking.

As part of the project management task CRWA will provide right-of-way (ROW) coordination with the ROW consultant contracted by BDVWA. This scope of work is limited to 20 hours of coordination by a Senior Engineer and 20 hours of coordination by an Associate Engineer for this task. Project delays or redesigns based on the ROW consultant's needs may result in additional coordination time which would be charged on a time and materials basis.

Task 2 – Data Review, Meetings, and Site Visits

Prior to commencing design work, the CRWA team will review available information, including the PER, prepared by others to develop a more intimate understanding of the long-term project objectives, identify missing information, verify right of way requirements, and determine possible additional work needed to fully comply with the grant requirements and develop a complete project. During this time, the preliminary schedule included herein will be verified and updated if necessary.

➤ **Task Deliverables:**

Updated schedule and a summary memo documenting existing information and outstanding data requirements followed by an in-person kickoff meeting to discuss the memo and review the design intent of the project. This task also includes budgeting for up to three additional site visits by the Project Team to conduct site walks as necessary during production of the design drawings.

Task 3 – Blending and Consolidation Pipelines Design

This task includes several new transmission and distribution pipeline designs as depicted in the key map above under sections B, C, and D. The designs include two bore and jack sections under Highway 247/Old Woman Springs Road. Previous design efforts by NV5 have presented these improvements within the *Zone B Blending and Transmission Pipelines* drawing set. Each respective design package will include 3 submittals one each at the 70%, 90%, and 100% phase. This proposal assumes the design may be incorporated into the Zone B Blending and Transmission Pipelines drawings.

Task 3A, Caltrans Crossing Permit Support and Design

This task includes design and support for obtaining Caltrans encroachment permits for the two crossings. The more southerly crossing at Luna Vista is intended to tie the BDVWA system to the HDWD system on the east side of the highway. The more northerly crossing is also intended to facilitate the interconnection of the BDVWA and HDWD systems, including providing the ability to provide water from the HDWD to the BDVWA Zone B system for blending purposes.

The following is a preliminary understanding of the details concerning this design, along with a preliminary sheet list and related commentary:

This design will consist of developing a small-scale drawing of each crossing to show detailed features of the existing roadway and utilities in plan and profile for submission to Caltrans in addition serving as a detail to the transmission pipeline plan and profile sheets. Design tasks will also include preparing a site-specific jack and bore technical specification. It is expected that additional survey work will be required to accurately present the location of Caltrans ROW.

➤ **Task Deliverables:**

(1) Drawing featuring (2) plan and profiles for submittal to Caltrans ROW. It has been assumed that this drawing will be incorporated into the Zone B Blending and Transmission Pipelines drawing set.

Task 3B, Bighorn Distribution System Pipeline Design

This design component includes new distribution lines in Boo Lane, Lanes End, Rainbow loop totaling approximately 7,300 feet as presented in the schematic as “Engineering Design Phase B”. This design phase would include appropriate placement of fire hydrants, replacement or relocated water meter service connections, system sample taps, air-vacuum valves and blow-offs as needed.

The following is a preliminary understanding of the details concerning this design, along with a preliminary sheet list and related commentary:

Preliminary design efforts by NV5 presents (5) plan and profile sheets within the Zone B Blending and Transmission Pipelines Drawings which includes Winters Road, Warren Vista Avenue, and Lanes End. While NV5 has setup sheets for this alignment the design is less than 50% since no profile design has been initiated due to the lack of topographic survey. The limited parcel and utility data that is presented within these sheets would also need to be verified and reviewed. It is expected that at least (2) additional plan and profile sheets would be required to account for Rainbow Loop which does not currently appear to be included within the NV5 drawings.

➤ **Task Deliverables:**

Development and design of 5 plan and profile drawings from 30% to 100% completion with the addition of one plan and profile drawing which has not yet been drafted.

Task 3C, Transmission Pipeline Design

The transmission pipeline design crosses the “Pipes” wash and conveys water from the future Zone B pump station near Rainbow Drive and Winters to the BDVWA Zone B system. Review of the NV5 drawings indicate that the transmission pipeline starts on Winters Road outside the future Zone B Pump Station and terminates near Mesa Vista and Wamego Trail. The proposed design includes approximately 17,000 feet of 6” PVC main (verify). Pressure requirements and final pipe material selection will be included in the 70% design submittal. It is assumed that all flows and operating pressures, including anticipated surge pressures, have been determined by others or will be provided by BDVWA. This design phase would include sample taps, air-vacuum valves and blow-offs as needed but there would be no fire hydrants or water service meter connections on this transmission pipeline.

Currently no topographic data is available for any portion of this alignment except for a brief portion on Winters Road near the future Zone B Pump Station. While NV5 has setup sheets for this alignment the design is less than 50% since no profile design has

been initiated due to the lack of topographic survey. The limited parcel and utility data that is presented within these sheets would also need to be verified and reviewed. At most, previous design efforts constitute a 30% draft.

➤ **Task Deliverables:**

Development and design of 17 plan and profile drawings from 30% to 100% completion.

Task 3D, Blending Pipeline Design

This design includes conveying HDWD flows to Zone B for blending with the BDVWA well water. It is assumed that all details regarding blending needs, flow control strategies, and operating conditions have either been determined by others or will be verified in subsequent phases. This includes two blending pipeline alignments: one from Reservoir B to Well 8 (approximately 5,300 feet) and one from the intersection at Tracy Blvd X Wamego Trail to the HDWD intertie at Luna Vista and Old Woman Springs (approximately 8,100 feet). This design phase would include sample taps, air-vacuum valves and blow-offs as needed but there would be no fire hydrants or water service meter connections on this transmission pipeline.

Currently no topographic data is available for any portion of these alignments except for the Reservoir B site. While NV5 has setup sheets for these alignments the design is less than 50% since no profile design has been initiated due to the lack of topographic survey and is representative of a 30% design effort. The limited parcel and utility data that is presented within these sheets would also need to be verified and reviewed.

➤ **Task Deliverables:**

Development and design of 13 plan and profile drawings from 30% to 100% completion.

Task 4 – 90% Submittal Meeting

After BDVWA has had time to review the 90% submittal CRWA will conduct a meeting, in person or virtual, to review and discuss BDVWAs comments and concerns regarding the design and prepare meeting minutes to document BDVWAs expectations for the 100% bid set drawings. This meeting will also serve as CRWAs final opportunity visit the site and document any relevant existing condition if necessary.

EXCEPTIONS/EXCLUSIONS

1. The scope of work described herein is focused on the necessary conveyance facilities. Additional tasks may be added pending a more detailed review of work by others to date, necessary ancillary components that may include additional tie-in

needs, pressure reducing valves, flow monitoring and control features, along with other components that may be identified pending a more detailed review and completion of the initial pipeline design and related plan and profile sheets.

2. Bidding Services if required, are not included in this scope of work. CRWA can provide a subsequent task order if this support is requested by BDVWA.
3. Construction Services if required, are not included in this scope of work. CRWA can provide a subsequent task order if this support is requested by BDVWA.

SCHEDULE:

The estimated schedule of the Project is as follows:

| Task No. | Task Name | Completion Date |
|-----------------|---|------------------------|
| Task 1 | Project Management | Ongoing Task |
| Task 2 | Data Review, Meetings, and Site Visits | Ongoing Task |
| Task 3 | Blending and Consolidation Pipelines Design | 11/15/2024 |
| Task 4 | 90% Submittal Meeting | 10/1/2024 |

BUDGET:

CRWA may, as the project requires, move budgets across line items without prior approval from BDVWA. The budget is based on time and materials, not to exceed \$279,040 based on the following task budgets:

| Task No. | Task Name | Budget |
|-----------------|---|------------------|
| Task 1 | Project Management | \$21,804 |
| Task 2 | Data Review, Meetings, and Site Visits | \$11,384 |
| Task 3 | Blending and Consolidation Pipelines Design | \$242,590 |
| Task 4 | 90% Submittal Meeting | \$3,262 |
| | Task Order Total | \$279,040 |

For CRWA:
California Rural Water Association

For Client:
Bighorn Desert View Water Agency

By: _____

By: _____

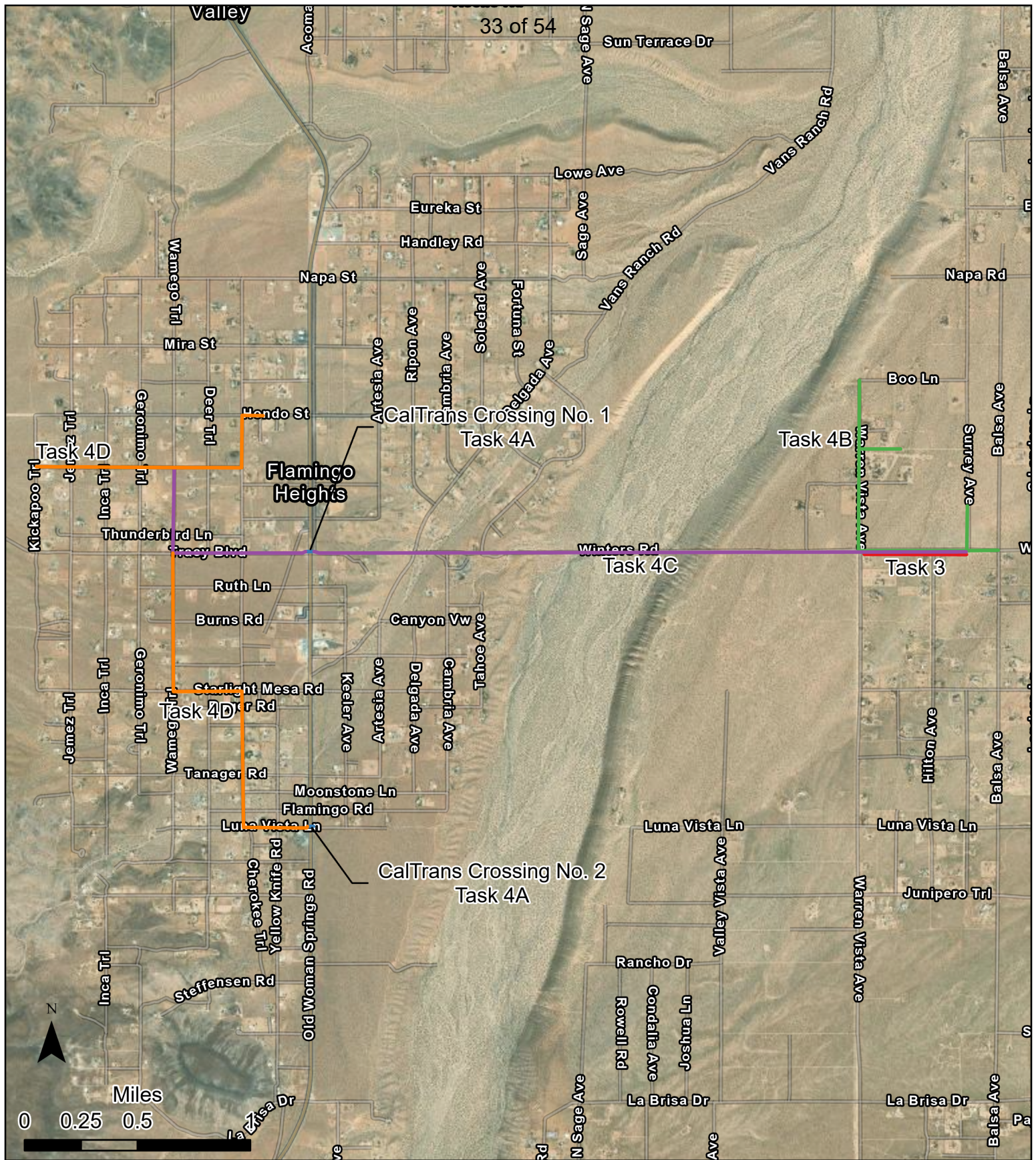
Date: _____

Date: _____

| Bighorn 01 - FEE (Pipeline Design) | | | | | | | | | | | |
|------------------------------------|--|------|-------|-------|-------|-------|-------|---------------|----------|-----------------|----------------------|
| | | LC | NC | AE | PE | SPE | DH | | | | |
| | 2023/2024 MWA Billing Rates | \$46 | \$130 | \$135 | \$160 | \$200 | \$200 | Subconsultant | Expenses | Labor Sub Total | Task Sub Totals |
| Task 1 | Project Management | | | | | | | | | | |
| 1.1 | Meetings and Coordination, invoices | 24 | 16 | 16 | 16 | 28 | 8 | | | \$15,104 | \$15,104 |
| 1.2 | ROW Coordination | | | 20 | | 20 | | \$0 | | \$6,700 | \$6,700 |
| | | | | | | | | | | \$0 | \$0 |
| | | 24 | 16 | 36 | 16 | 48 | 8 | \$0 | \$0 | \$21,804 | \$21,804 |
| Task 2 | Data Review, Kick off Meeting | | | | | | | | | | |
| 2.1 | Data Review, Kick off Meeting | 4 | 2 | 28 | 16 | 16 | 2 | | \$1,000 | \$10,384 | \$11,384 |
| | | | | | | | | | | | |
| | | 4 | 2 | 28 | 16 | 16 | 2 | \$0 | \$1,000 | \$10,384 | \$11,384 |
| Task 3 | Blending and Consolidation Pipelines Design | | | | | | | | | | |
| 3A | Cal Trans Crossing | | | | | | | | | \$0 | \$0 |
| | 70% Design | | | 54 | 18 | 6 | | | | \$11,370 | \$11,370 |
| | 90% Design + Cost Estimate | | | 40 | 30 | 12 | | | | \$12,600 | \$12,600 |
| | 100% Design + Cost Estimate | | | 18 | 38 | 6 | 2 | | | \$10,110 | \$10,110 |
| 3B | Bighorn Distribution Design | | | | | | | | | \$0 | \$0 |
| | 70% Design | | | 100 | 34 | 6 | | | | \$20,140 | \$20,140 |
| | 90% Design + Cost Estimate | | | 66 | 54 | 12 | | | | \$19,950 | \$19,950 |
| | 100% Design + Cost Estimate | | | 32 | 70 | 6 | 2 | | | \$17,120 | \$17,120 |
| 3C | Winter Road/Tracy Blvd Design | | | | | | | | | \$0 | \$0 |
| | 70% Design | | | 154 | 52 | 8 | | | | \$30,710 | \$30,710 |
| | 90% Design + Cost Estimate | | | 100 | 82 | 12 | | | | \$29,020 | \$29,020 |
| | 100% Design + Cost Estimate | | | 50 | 104 | 8 | 2 | | | \$25,390 | \$25,390 |
| 3D | Blending Pipeline Design | | | | | | | | | \$0 | \$0 |
| | 70% Design | | | 120 | 40 | 6 | | | | \$23,800 | \$23,800 |
| | 90% Design + Cost Estimate | | | 76 | 62 | 12 | | | | \$22,580 | \$22,580 |
| | 100% Design + Cost Estimate | | | 40 | 80 | 6 | 2 | | | \$19,800 | \$19,800 |
| | | | | | | | | | | \$0 | \$0 |
| | | 0 | 0 | 850 | 664 | 100 | 8 | \$0 | \$0 | \$242,590 | \$242,590 |
| Task 4 | 90% Submittal Meeting | | | | | | | | | | |
| 5.1 | 90% Submittal Meeting | 2 | 2 | 6 | | 6 | 2 | | \$500 | \$2,762 | \$3,262 |
| | | | | | | | | | | \$0 | \$0 |
| | | 2 | 2 | 6 | 0 | 6 | 2 | \$0 | \$500 | \$2,762 | \$3,262 |
| Total Hours = | | 30 | 20 | 920 | 696 | 170 | 20 | \$ | - | \$1,500 | Subtotal = \$279,040 |

\$0

Task Order Budget: \$279,040



Bighorn-Desert View Water Agency Project Tasks

- Task 3 - HDWD Intertie Transmission Main (Project 1) Task 3 is a Separate Grant Proposal
- Task 4A - CalTrans Crossings 1& 2 Design (Project 2- Phase A)
- Task 4B - Goat Mountain Distribution Piping (Project 2 - Phase B)
- Task 4C - Winters Road/Tracy Blvd Transmission Line (Project 2 - Phase C)
- Task 4D - Winters Road/Tracy Blvd Transmission Line (Project 2 - Phase C)

**BIGHORN-DESERT VIEW WATER AGENCY
PLANNING/LEGISLATIVE/ENGINEERING/GRANTS/SECURITY
AGENDA ITEM SUBMITTAL**

Meeting Date: February 13, 2024

To: PLEGs Committee Members

Budgeted: Funded thru SWRCB PI/C Grant Agreement No. D2102065/ Proj. No. 3610009-002C

Cost: TBD based on need

From: Marina D. West

General Counsel Approval: Required on Professional Services Agreement

CEQA Compliance: Notice of Determination filed May 2021 (SCH No. 2021020354)

Subject: Review Recommendation to Authorize Issuance of Professional Services Agreement to Fomotor Engineering for Pipeline Improvement and Consolidation Project "On-Call Survey" Support Services..

SUMMARY

The Agency was awarded an \$11M construction grant to advance pipeline improvements envisioned in the Agency Preliminary Engineering Report (PER) completed in October 2021.

Staff is seeking support for any land survey work that may be identified in the engineering design phase. Since staff cannot wholly predict the totality of land survey needs to prepare a full Request for Proposal, it is best to contract with a land survey firm on an "on-call as-needed" basis.

Staff has received a proposal from Fomotor Engineering for on-call as-needed services. The Agency has been utilizing Fomotor Engineering for small projects since 2020 as they have been the only firm responsive to staff's requests for services.

RECOMMENDATION

That the Committee consider taking the following action(s):

1. Agendize approval of Professional Services Agreement to Fomotor Engineering for on-call as-needed land survey needs to support the Pipeline Improvements and Consolidation (PI/C) Project.

BACKGROUND/ANALYSIS

The Agency was awarded an \$11M construction grant to advance pipeline improvements envisioned in the Agency Preliminary Engineering Report (PER) completed in October 2021.

The services of a land surveyor will be needed but have not been completely identified. However, the Agency has completed three single-parcel annexations over the past few years and Fomotor Engineering has completed the survey work for those projects. They were originally selected to provide these services in 2020 and were the only responsive firm to our request. Since that time have always been very responsive, charge a reasonable fee and their land surveyor lives locally. Furthermore, no other

local surveyor has been identified to provide services other than NV5. NV5 of late has been unresponsive or very slow to respond to staff's inquiries on this project.

Staff is seeking support for the land survey needs required to complete the pipeline design services and given the excellent support service history of Fomotor Engineering, on various projects, a "time and materials" cost proposal was solicited. The engineering firm selected for design, California Rural Water Association (CRWA), will assist staff in determining survey needs, draft written proposals to be submitted to Fomotor Engineering for an exact cost proposal.

Staff is recommending the Committee move the item to the full Board of Directors to authorize issuance of a Professional Services Agreement with Fomotor Engineering for on-call as-needed land survey needs in support of the project design. It is expected that these costs would be eligible for reimbursement through the grant.

PRIOR RELEVANT BOARD ACTION(S)

2/14/2023 Motion No. 23-006 Adopt Resolution No. 23R-03 Authorize execution of \$11,000,000 Funding Agreement No. D2102065 with the State Water Resources Control Board for the Purpose of the Potable Water Supply Systems Improvements Consolidation of Water Systems Project No. 3610009-002C.

Fomotor Engineering

225 South Civic Drive, Suite 1-5 ♦ Palm Springs, California 92262

Office: (760) 323-1842 ♦ Facsimile: (760) 323-1742

Email: phillip@fomotor.com

Civil Engineering

Land Surveying

Land Planning

January 30, 2024

Bighorn-Desert View Water Agency
Attn: Marina D. West, General Manager
622 S Jemez Trail
Yucca Valley, California 92253
Tel: (760) 364-2315
Email: mwest@bdvwa.org

COVER LETTER

Dear Marina,

Pursuant to your request, we are pleased to present the following proposal for On-Call Survey Services for the Bighorn-Desert View Water Agency. Having served as the on-call surveyor for several Coachella Valley cities during our nearly 30-year history in the valley and high desert, we understand the importance of providing reliable, accurate, and expediated surveys for public municipalities and agencies while making use of modern technologies including UAV's, GPS, robotic total stations, digital leveling equipment, and related software.

Best regards,

FOMOTOR ENGINEERING

(Fomotor, Inc.)



PHILLIP K. FOMOTOR, P.E., P.L.S.

CEO

Civil # 47284

QSD / QSP # 23078

Land Survey # 7070

PWCR Number: 1000578820

1. Firm's Background, Qualifications, and Experience

Background

Fomotor Engineering (Taxpayer identification number 61-1587938) is a full-service, multi-discipline civil engineering, planning and surveying firm founded 29 years ago in 1994. Company founder and owner, Phillip Fomotor, has over 37 years of professional engineering experience. Phillip holds licenses in the State of California. Fomotor Engineering has an extensive background in all phases of civil design, field surveying, environmental document preparation and project management. Our clients are from the private sector and public agencies in the Coachella Valley, the High Desert, and throughout Southern California.

The following planning, construction, and design services have been provided to the Coachella Valley throughout our 29-year history:

Land Surveying Services include: property surveying, topographical surveying, ALTA's, construction surveying, construction staking, preparation of lot line adjustments, subdivision maps, easement legal descriptions, corner records and Records of Survey.

Civil Engineering Services include: land planning, site plan preparation, rough and precise grading plans, drainage plans, street improvement plans, utility improvement plans and hydrology studies.

Environmental Services include: Preparation of Water Quality Control Plans (WQMP), State Storm Water Pollution Prevention Plans (SWPPP), and Fugitive Dust Control Plans (PM10).

Project Manager and Key Personal Abbreviated Resumes

PHILLIP FOMOTOR, P.E., P.L.S., Office Manager

President and Principal of Fomotor Engineering, Phillip is licensed in the State of California as a Civil Engineer and Land Surveyor with over 37 years of extensive experience in all aspects of civil engineering, land planning, surveying, environmental document preparation and project management.

Education:

Bachelor of Science in Engineering (with honors), University of Canterbury, Christchurch, New Zealand, 1982

Licenses/Certifications:

State of California – Licensed Civil Engineer No. 47284;

State of California – Licensed Land Surveyor No. 7070,

State of California – Qualified SWPPP Developer & Practitioner
 Certificate # 23078

JONATHAN GUZMAN, P.L.S., Survey Department Manager

Jonathan has over eleven years' experience as Survey Department Manager and over 22 years' experience in the land survey industry. Jonathan prepares estimates, oversees project management of all field, topographical and construction surveys. He also supervises the preparation of base sheets, tract maps, parcel maps, lot line adjustments and ALTA surveys. Registrations/Certifications: California – **Licensed Land Surveyor No. 8652.**

Education:

Associate of Science, Kirkwood College, Cedar Rapids, Iowa

MATTHEW HANNAH, L.S.I.T., Survey Party Chief / Senior Survey Technician

Mathew has over sixteen years' experience in land surveying and has a State **Land Surveyor in Training Certificate, (LST 7950)**. He is proficient in supervising and performing field surveys including boundary, topographical, aerial control, ALTA, precision leveling (up to second order class 1 NGS standards), construction control, and construction staking.

EDDIE HERNANDEZ, L.S.I.T, Senior Survey Technician

Eddie has over twenty-four years' experience in land surveying and has a State **Land Surveyor in Training Certificate, (LST 8761)** and is a Certified Survey Technician, #0318-5922, CST IV Office Manager, National Society of Professional Surveyors. He is proficient in mapping, supervising and performing field surveys including boundary, topographical, aerial control, ALTA, precision leveling (up to second order class 1 NGS standards), construction control, and construction staking.

Danny Hannah., Licensed Drone Remote Pilot, Survey Rod Person / Survey Technician

Abraham has five years' experience in land surveying and is a **Licensed Drone Remote Pilot**. He is proficient in assisting with field surveys including boundary, topographical, aerial control, ALTA, precision leveling (up to second order class 1 NGS standards), construction control, and construction staking. Danny has AQMD PM-10 Certification

ZACHARY STEIN, Engineering/Survey technician

Zach has over two years of engineering and survey assistance and drafting experience.

Firm Ownership

Fomotor Engineering is a California S Corporation. (Fomotor Engineering is not a subsidiary of a parent company.)

Fomotor Engineering (Fomotor, Inc.) is a Registered Public Works Contractor with the Department of Industrial Relations. PW-LR- Number: 1000578820

Project Understanding, Approach, and Scheduling

1. Upon a written or digital request for surveying services received our Survey Department Manager will review the request, contact Agency staff for additional information if needed, and schedule a field survey when applicable.
2. When expediency is not required, the field survey will typically be performed within one week of the request. When expediency is required or when the survey will be providing staking for an active construction project, our staff will reschedule existing projects, as needed, to ensure the field survey will be performed in 1 to 3 business days.
3. In the case of construction staking, cut sheets and staking plats or the digital copy thereof will be provided in 1 or 2 business days or as requested by Bighorn-Desert View Water Agency.
4. In the case of Topographic Survey and Base Mapping, the completed base sheet files will typically be provided one week after the survey or as required by Bighorn-Desert View Water Agency. Base sheet files typically include:
 - a. PDF of survey base sheet
 - b. PDF of survey base sheet with aerial overlay
 - c. CAD file of base sheet (Civil 3d, AutoCAD, or MicroStation format)
 - d. CAD file of aerial photo alignment drawing (Civil 3d, AutoCAD, or MicroStation format)
 - e. UAV aerial photo file

- f. digital terrain model file (if requested)
 - g. reference maps and deeds (if requested)
 - h. utility research (if requested)
 - i. video of a 360-camera walkthrough of site similar to google street view (if requested)
 - j. site photos (if requested)
5. As directed by client, following base sheet provision a Corner Record of Record of Survey will be prepared to note any boundary corners set during the survey.
6. The Survey Department Manager or specific project manager will be available during the length of the project to address any questions, concerns, or request for additional staking or survey.

Available Scope of Work

1. Record Map Research
 - Research current available record maps on file with Riverside County. Identify control monumentation to be used as onsite horizontal control.
 - Identify monumentation of record that may be impacted due to project construction.
 - Coordinate with client on pending projects impacting current right-of-way boundaries.
2. Utility Plat & Record Drawing Research
 - Contact local public utility companies to obtain currently available utility plats and record as built drawings.
3. Site Survey Control
 - Using redundant GPS site surveys, establish horizontal alignment control, including street centerlines and intersections.
 - Using Digital Survey Levels tie into County, USGS or City Benchmark Network and set temporary benchmarks for control purposes.
 - Perform a survey of the existing boundary monuments and benchmarks to establish or verify horizontal and vertical control.
 - Existing control and placement of control stakes to be surveyed using either RTK GPS, Static GPS readings and processing, Robotic or Manual Total Station traverse, or via a differential leveling loop using a digital level and invar rod where high precision is needed Survey all tie points on curb, walls, and visible utilities to ensure accurate visible improvement tie points.
 - Place one set of construction control stakes and prepare Staking Control Exhibit for use by survey crews and Construction Inspector when requested.
 - Control and staking tolerances to conform to Staking tolerances as noted in section 12.3 of the CALTRANS survey Manual.
4. Survey Monumentation Impact Assessment (Survey Control)
 - Per the above Record Map Research, survey any existing onsite survey monuments and existing benchmarks.
 - Access if replacement or protection of monument will be required during construction.
5. Monument Ties and Replacement
 - Perform field survey creating or recovering ties to existing survey monuments of record which may have been lost due to new construction for the preservation of monuments as pursuant to California State Law.
 - Prepare and file with Riverside County Surveyor's Office the necessary documentation (Corner Record or Record of Survey) required in association with preserving and replacing any destroyed survey monuments.

6. Right of Way / Legal and Plat Preparation

- As required by project, perform filed survey or use existing site survey to locate critical improvements to be used as control along with the above boundary survey to establish necessary control for the preparation of proposed easements, quitclaim deeds, lot line adjustments, certificate of compliance, lot descriptions, or parcel descriptions and the accompanying plat.
- Provide in house review prior to submittal to Agency for review and comment.

7. Boundary Survey

- Research Record Maps within the survey area and review title report documents provided by client.
- Prepare for field survey; calculate anticipated existing monument and property corner coordinates based upon record data.
- Perform field survey, search area for existing property corner monuments and other Street corner monuments that may be needed for survey control purposes.
- Perform boundary traverse or GPS survey of existing found monuments.
- Perform survey calculations and reduce field data to compare the relative locations of the found monuments with record data.
- Prepare Record Map (e.g. Corner Record, Record of Survey) for submittal to client and San Bernardino County for technical review. Revise Record Map per provided comments and resubmit as required.
- Set corner monumentation at un-monumented property corner locations.

8. Topographic Survey and Base Mapping

- Perform control survey placing and locating required aerial control targets.
- Fly sight with unmanned drone obtaining high resolution aerial photography.
- Perform horizontal and vertical field survey locating visible improvements (Survey data will include, but not be limited to, trees over 2-inches in diameter, buildings, walkways, sidewalks, access ramps, driveways, curbs, gutters, cross gutters, edge of pavement, asphalt berms, fire hydrants, water valves, manholes, water meters, signs, streetlights, power poles, mailboxes, walls, fences, structures, traffic signal poles, and all other visible features) to supplement the aerial survey.
- For street cross sections all centerline monuments shall be located, and survey information shall extend a minimum of 10-feet beyond the street right-of-way.
- Tie elevation into established City/County benchmark system.
- Process orthographic aerial photo.
- Process surface model based on aerial photography and filed survey.
- Prepare Topographical Site Base Sheet plotting the above and plot one-foot contours and notable spot elevations.
- Review Client provided Title Report and referenced record documents and plot easements as noted therein onto the Topographical Base Sheet.

9. Clearing/Removals

- One set of reference stakes or marks at 200-foot intervals on tangent line and 100 feet on curves will be set along the limits of the construction area or Right-of-Way for clearing purposes.

10. Rough Grade

- One set of grid stakes at 50-foot intervals. Stakes will indicate cut or fill to finish grade as shown on approved mass grading plan.
- One set of stakes at 25-foot intervals and all angle points with appropriate cut or fill.
- Provide one set of offset stakes for sidewalks at 25-foot intervals, grade breaks and angle points with cut or fill to finish surface.

11. Finish Grade

- Provide one set of stakes to delineate at 25-foot intervals and all angle points with appropriate cut or fill.
- Provide one set of offset stakes for sidewalk at 25-foot intervals, grade breaks and angle points with grades to finish surface.
- Provide one Blue Top for building pad. Stake to be set at pad grade.
- Pad Certifications – prior to construction of improvements, provide inspection services necessary to provide certification of pad grade as shown on the approved grading plan.

12. Retaining/Garden Wall

- Provide one set of offset, line and grade stakes for wall construction set at 50-foot intervals with appropriate cut or fill to top of footing.

13. Bridge Structure

- Provide one set of stakes for foundation layout and deck grades.

14. Entrance Structures

- Provide one set of stakes with appropriate cut or fill for the construction of entrance structures.

15. Building Foundations

- Provide one set of stakes at an offset of 10' x 10' to the building corners, one stake per corner with grades to the finish pad.

16. Water, Sewer, Storm Drain, or Irrigation Lines

- Provide one set of offset stakes at 50-foot intervals with grades to finish surface.

17. Drainage Boxes

- Provide one set of stakes at a 5-foot offset to centerline of box with grades to top of grate.

18. Tree Locations

- Provide one stake at centerline of each tree location.

19. Project Administration

- The Surveyor of Work shall be available during the length of the project to address any questions or concerns which may arise. Cut sheets shall be prepared and submitted when requested.

20. Office Calculations

- Calculations as necessary to provide the field survey crews with data as needed for staking and supervision as required.

-

21. Independent Field Checks Of Contractor Staking Work

- Perform control field survey to assure the integrity of the control stakes. Using verified control stakes, perform field survey to assure stakeout set-up points. Perform field survey to verify all positions staked in the field shall be checked against the computed positions as requested.
- Prepare electronic stakeout reports of findings for using by Construction Administrator, City Construction Inspector, and/or other Agency Staff.

2. References of California government agencies

City of Cathedral City

John Corella PE
Director of Engineering / Public Works
P. (760) 770-0327
E. JCorella@cathedralcity.gov

Dave Faessel PE
Engineer
P. (760) 770-0327
DFaessel@cathedralcity.gov

We have provided City of Cathedral City Engineering Department On-call Comprehensive Plan Checking Services for about 5 years from 2018, with John Corella.

We provided City of Cathedral City on-call Land Survey Services for about 4 years, from 2018 through 2022.

We have provided City of Cathedral City surveying services over the years, including:

- Field survey and base sheet preparation of approximately 11,200 linear feet of Date Palm Drive at 30th Avenue and between Ramon Road and Gerald Ford Drive. (2022)
- Field survey and base sheet preparation of approximately 4,200 linear feet of the westerly side of Date Palm Drive south of Dinah Shore. (2018)
- Field survey and base sheet preparation of approximately 5,600 linear feet of street cross sections along Dinah Shore Drive, Date Palm Drive and Cathedral Canyon Drive. (2018)
- Field survey and base sheet preparation of approximately 1,700 lineal feet of Street cross-sections along Via De Anza. (2021)
- Boundary survey in Cathedral City along Highway 111, between Date Palm Drive and the City limits with Rancho Mirage (2019)
- Field survey and base sheet preparation at Shifting Sands Trail and Ramon Road. (2019)
- Field survey and base sheet preparation of approximately 800 linear feet of Vega Road and 900 linear feet of Avenida Ximino cross-sections. (2017)
- Field survey, base sheet preparation and design for the East Palm Canyon Drive widening into hillside (approx 500 lineal feet for Tract 33668 at the southwest corner of East Palm Canyon Drive and the West Cathedral Canyon Flood Control Channel in the City of Cathedral City.)

City of Rancho Mirage

Leland Cole
City Engineer
P. 760-770-3224
Cel. 760-902-2782

Civil Engineering Design and Land Survey assistance with miscellaneous Street and Drainage Improvement projects including:

- Mirage Cove Drive, Stellar Drive, Nebulae Way, Venus Drive & Saturn Circle monument tie outs
- Field survey and base sheet preparation of approximately 4,000 lineal feet of Monterey Avenue for the street widening project (Dinah Shore Drive to Gerald Ford Drive).
- Frank Sinatra Street improvements at 'The Springs' Frank Sinatra Drive north entrance, street widening, sidewalk improvements and curb modification.
- Clancy Lane / Monterey Ave. right turn pockets improvements, survey assistance
- Frank Sinatra street improvement design between Bob Hope and Monterey
- Magnesia Falls Drive, Cholla Lane and Verbina Road land survey and design.
- Follansbee Road Street Improvements survey and design.
- Monterey and Clancy Lane right turn pocket survey and design.
- Storm Drain Master Plan, and City Storm Drain Main Line Improvement Design

City of Desert Hot Springs

Jonathan Hoy, former City Engineer
65950 Pierson Boulevard
Desert Hot Springs, CA 92240
(760) 238-1540 cell

We have provided City of Desert Hot Springs surveying services over the years, including:

- Field survey and base sheet preparation for the intersection of Indian Avenue and Mission Creek Wash in the City of Desert Hot Springs, CA.
- Boundary and Topographical Surveys and Base Sheet preparation for Mission Springs Park (portion of APN 656-050-005), Wardman Park (APNs 639-072-017, -018 & -019) and Coyote Park (APN 644-210-006) in the City of Desert Hot Springs, CA.
- Field survey and preparation of a survey base sheet for the Palm Drive and Pierson Boulevard Intersection Improvements for City Center in the City of Desert Hot Springs, CA
- Indian Avenue Intersection Geometric Designs for Tract 34306.

City of Indio

We have provided surveying services over the years in City of Indio including:

- Street widening design for 50th Avenue (arterial) 1 mile, Monroe Street (arterial) approx. 1 mile and Jackson Street (arterial) approx. 1 mile, around 640+/- acre Indian Palms Country Club - Lead project engineer and land surveyor for a gated residential community consisting of 1,200 residential units, two 18-hole golf courses, a 6,000 square foot clubhouse, a 6,000 square foot conferencing facility, hotel and park lot expansion, maintenance yard, a hotel golf clubhouse cart barn and miscellaneous common area amenities, approximately 5 miles on-site street, water and sewer main improvement plans and approximately 3.0 miles offsite street, water and sewer main improvements, City of Indio.
- Designed, bid and construction managed recent storm drain improvements in Indian Palms.
- Street widening design for approx. 1,400 lineal feet of Golf Center Drive for the Golf Center Parkway project (PM 30118), with Caltrans approvals also.
- Preparation of street improvement plans on State Highway 111 with Caltrans review and approval for Shifin Medical Center, City of Indio
- Jefferson street improvement plans at the N.E. corner of Hwy 111 for a proposed veterinary clinic, City of Indio

A Sampling of Private Projects

GHA Companies

Mario Gonzales, President CEO,
 P. 760-969-1400 ext 1420 Office,
 Cel. 760-250-8611

Various residential subdivision projects, including Sunny Lane Tract 36623, Rancho Mirage, and the District Project Tract 36747, Cathedral City
 Complete Civil Design, Land Surveying, Mapping and Construction Staking assistance.

Rio Del Sol

Jared Dusha 360-949-0685

Ongoing complete Civil Design, Land Surveying, Mapping and Construction Staking assistance.

Dream Hotel, Palm Springs CA.

Lauri Kibby
 310-877-3110 cell

7.5 acre Hotel Project in Palm Springs CAo

Ongoing complete Civil Engineering and Land Surveying and Mapping assistance.

3. Fee Schedule

We propose to perform 'On-call Surveying Services per our "Schedule of Hourly Rates (Prevailing Wage)" or "Schedule of Hourly Rates (Non Prevailing Wage)" below.

2024 Schedule of Hourly Rates (Prevailing Wage)

| | |
|---|----------|
| Registered Engineer/Land Surveyor/Project Manager | \$140.00 |
| Senior Designer | \$125.00 |
| Designer/CAD Operator with Computer Workstation | \$110.00 |
| Senior Planner | \$125.00 |
| Planning Technician | \$110.00 |
| Senior Survey/ Mapping Technician | \$120.00 |
| Survey/ Mapping Technician | \$100.00 |
| One Man Survey Crew | \$195.00 |
| Two Man Survey Crew | \$300.00 |
| One Man Survey Crew (Overtime – Daily) | \$230.00 |
| Two Man Survey Crew (Overtime – Daily) | \$375.00 |
| One Man Survey Crew (Overtime – Saturday) | \$235.00 |
| Two Man Survey Crew (Overtime – Saturday) | \$380.00 |

Reimbursable Expenses

| | |
|---|-------------|
| Reproduction, printing, delivery service, and other sub consultants | Cost |
| Travel time | Hourly rate |
| Monumentation material and installation | Cost |

Schedule of Hourly Rates (Non Prevailing Wage)

| | |
|---|----------|
| Registered Engineer/Land Surveyor/Project Manager | \$140.00 |
| Senior Designer | \$125.00 |
| Designer/CAD Operator with Computer Workstation | \$110.00 |
| Senior Planner | \$125.00 |
| Planner Technician | \$110.00 |
| Senior Survey/ Mapping Technician | \$120.00 |
| Survey/ Mapping Technician | \$100.00 |
| One Man Survey Crew | \$140.00 |
| Two Man Survey Crew | \$200.00 |

Reimbursable Expenses

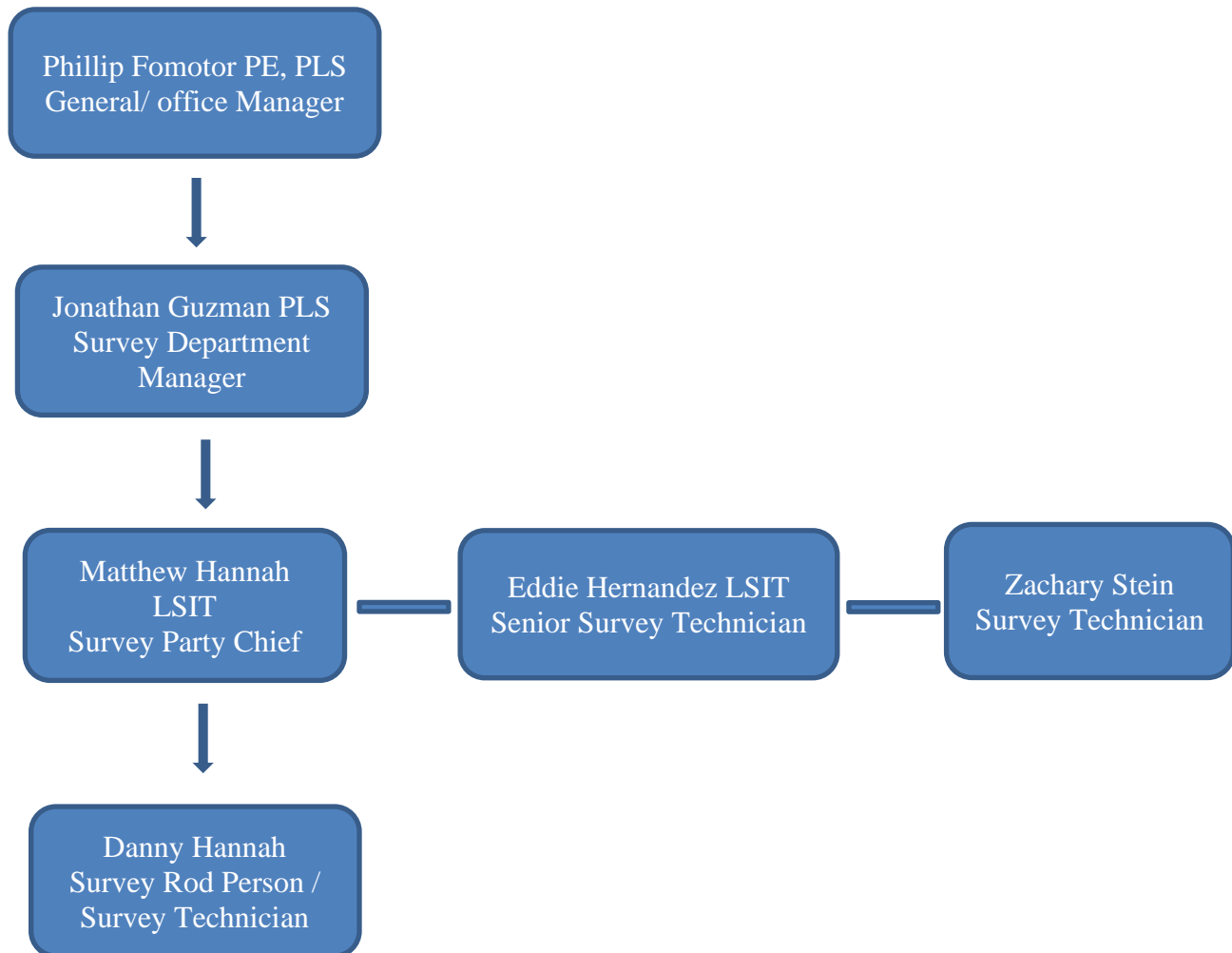
| | |
|---|-------------|
| Reproduction, printing, delivery service, and other sub consultants | Cost |
| Travel time | Hourly rate |
| Monumentation material and installation | Cost |

4. List of Complementary Services Offered

Engineering and Planning Services as noted on the previous Schedule of Hourly Rates

5. Staffing and Project Organization

Staff is structured as below. Direction is given descending and quality control and inhouse review is perform ascending as portions of the project are completed.





BIGHORN-DESERT VIEW WATER AGENCY

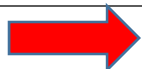
Our Mission - "To provide a high quality supply of water and reliable service to all customers at a fair and reasonable rate."

Planning/Legislative/Engineering & Grant Standing Committee SPECIAL Meeting Minutes

Committee Members: President Burkhart & Director Close-Dees

BOARD MEETING OFFICE
1720 N. CHEROKEE TR.
LANDERS, CALIFORNIA 92285

NOTE MEETING TIME



October 17, 2023
Time – 4:00 PM

PUBLIC AND BOARD WISHING TO PARTICIPATE REMOTELY

****TELECONFERENCE LINE THRU ZOOM 669-900-6833****

OR

[Join Zoom Meeting](#)

Please click the link below to join the webinar:

<https://us02web.zoom.us/j/81729170815?pwd=WkxpTGNSN1pTRVpnaUE0VTE5R3F0Zz09>

Passcode: 385918

Or Dial:

1-669-900-6833

Webinar ID: 817 2917 0815

Passcode: 385918

CALL TO ORDER

Chair Burkhart called the meeting to order at 4:03 pm

PLEDGE OF ALLEGIANCE

Led by David Chapman.

ROLL CALL

Directors Present: Chair Burkhart
Director Close-Dees

Staff Present: Marina West

Public Present: At the start of the meeting, 1 member(s) of the public indicated they were participating via teleconference. 1 members of the public were present in the meeting room. 2 member(s) of the Board was present in the meeting room as an observer only.

APPROVAL OF AGENDA

The Committee approved the Agenda as presented.

Discussion and Action Items -

1. Review Ames-Reche Management Area Annual Report for Fiscal Year 2022/23

GM West gave a verbal staff report and PowerPoint presentation.

Directors asked questions regarding various aspects of the reported information. A brief discussion ensued regarding the pros and cons of reducing the Annual Baseline Allocation of the water supply and other ideas for balancing the basin. It was noted that Agency production has been reduced from 677 AF to 522 AF post-cannabis and 680 AF have been stored, some transferred from Mojave Water Agency pre-store accounts. All the while, for the past 4 years Hi-Desert Water District has increased production to take carry-over water from a year when the well was down for repairs. Hi-Desert Water District has not recharged any State Water Project water into the Ames-Reche basin.

Public Comment: None.

2. Status Report of Activities of the Community Water Systems Alliance

GM West gave a verbal staff report summarizing the actions of the Alliance at its annual planning meeting held October 16, 2023. This being the second year of the “two year” session the CWSA is following those bills that advanced in year two. She mentioned the One Water Econ report on the affordability of Chromium-6 treatment. Lastly, there will be opportunities to travel to Sacramento to advocate for legislation affecting the Agency and the CWSA members.

Public Comment: None.

3. Status Report Goat Mountain Replacement Well (Prop. 1/ Rnd. 1 Grant)

GM West gave a verbal staff report. GM West reported that the borehole target depth was 600 feet with a final well depth of 500 feet. Bedrock was actually encountered at 400 feet. Not unexpected but staff was more hopeful for a deeper installation. The well screen will be placed from 300 to 380 feet below ground surface with a deep ‘sump’ should the pump need to be lowered to bottom in the future.

Public Comment: None.

4. Status Report Water Meter Replacement Program (Drought Grant)

GM West gave a verbal staff report noting that all materials for the project have been received and staff is preparing to execute a strategy for successful completion. GM West stated that 45 meters have been exchanged to date and third quarter report to the grantor does have labor reimbursement. Fourth quarter will have the meters and meter materials reimbursement from deliveries made in September.

Public Comment: None.

5. Status Report System Interconnection at Winters & Rainbow Road (Prop. 1/Rnd 2 Grant)

GM West gave a verbal staff report noting that the next step is acquisition of right-of-way and this alignment is within an alignment of the Pipeline Improvements/Consolidation Project.

Public Comment: None.

6. Status Report Potable Water Systems Improvements Consolidation of Water Systems (\$11M PI/C Project Grant)

GM West reported that the Professional Services Agreement with Monument ROW is near finalization. The next goal is to solicit engineering services to advance design of project elements. GM West hopes to finalize that process by the end of the year.

a. Discuss proposal for grant administrative services from Landstedt Consulting Services

GM West reached out to Landstedt Consulting for a proposal to assist with grant administration. GM West works with Ms. Landstedt on the meter replacement grant and she has shown herself to be extremely helpful and knowledgeable about grant reporting processes. GM West would like to retain Landstedt Consulting Services on somewhat of an “on-call services basis”. The project administration is not so much in need of the services in the proposal but she is more interested in how to set-up the grant administration tracking which would lead to streamlined quarterly reporting. GM West would like to present this proposal to the full Board of Directors in November for consideration of approval.

Public Comment: None.

7. Consent Items –

a. PLEGS Committee Meeting Minutes, August 16, 2023.

Recommended Action:

Approve as presented:

Public Comment: None.

Committee approved the Consent Item(s) as presented.

8. Public Comment Period

None.

9. Verbal Reports - Including Reports on Courses/Conferences/Meetings

1. Committee Members' Comments/Reports – None.
2. General Manager's Report – None.

10. Adjournment

Chair Burkhart adjourned the meeting at 5:13 pm.

Approved by:

John Burkhart, Committee Chair

Official Seal